



What's New

Contact Us

Help



Road
Inventory



2009 Needs
Study Report



Programs
and Projects



Crash/Traffic
Engineering



Bridge



Pavement
Management



Special
Requests

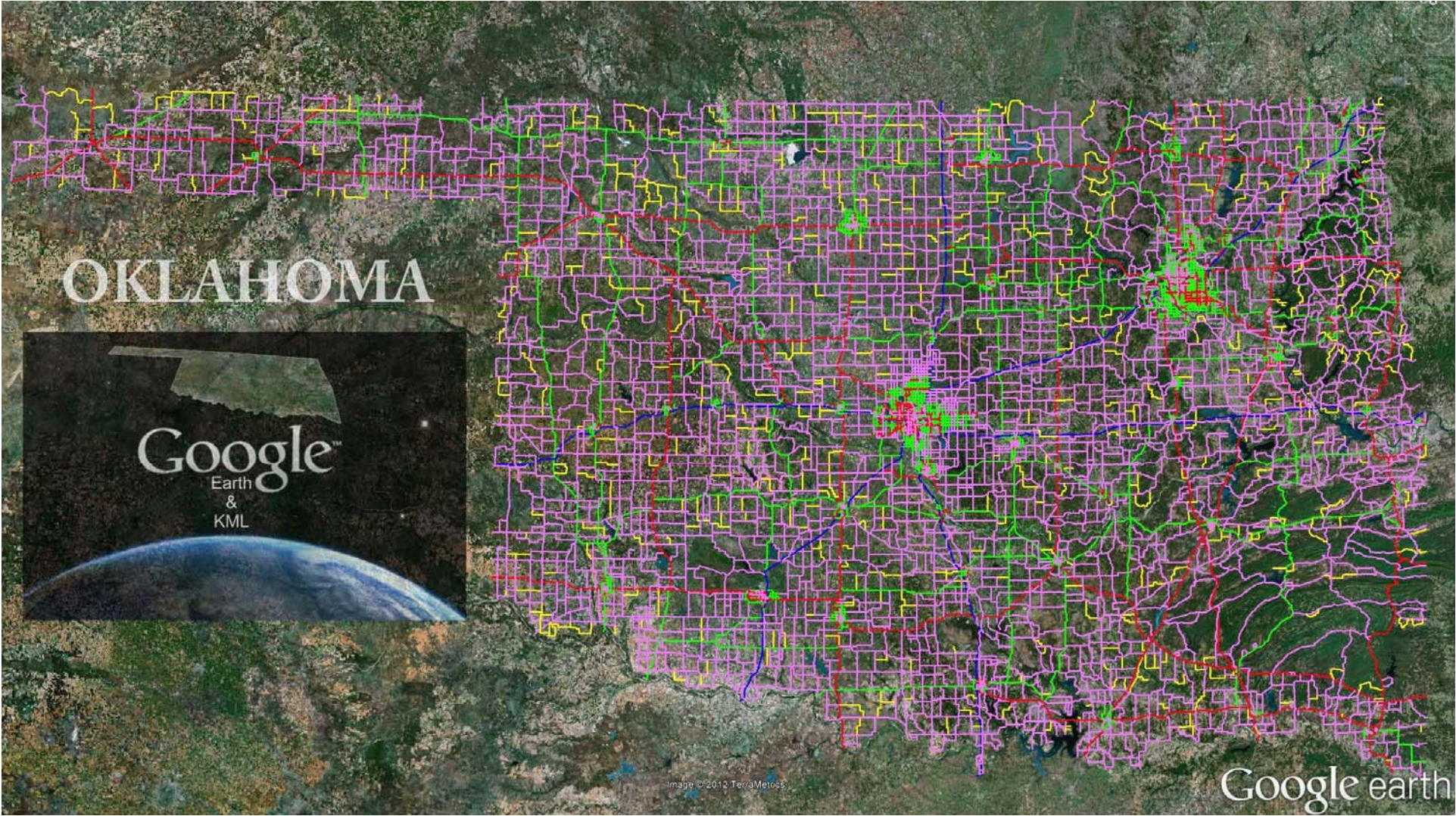


Reports



Environmental

Warning! The required Adobe SVG Viewer was not detected.
This free viewer is required in order to display dynamic map content.
Please [Download Plug-in](#) before entering this site.



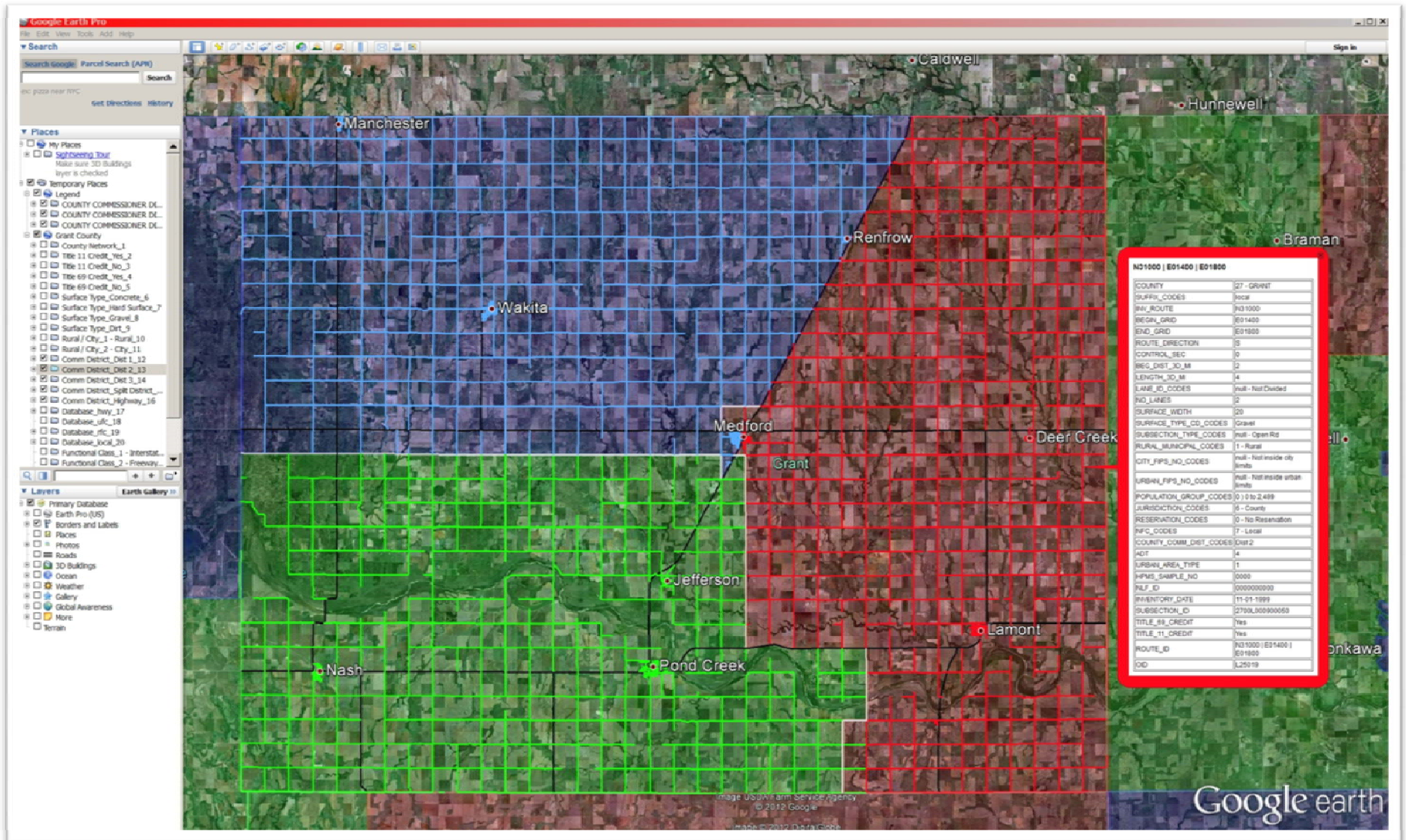
OKLAHOMA



Image © 2012 TerraMetrics

Google earth

Roadways in County Commissioner Districts Grant County



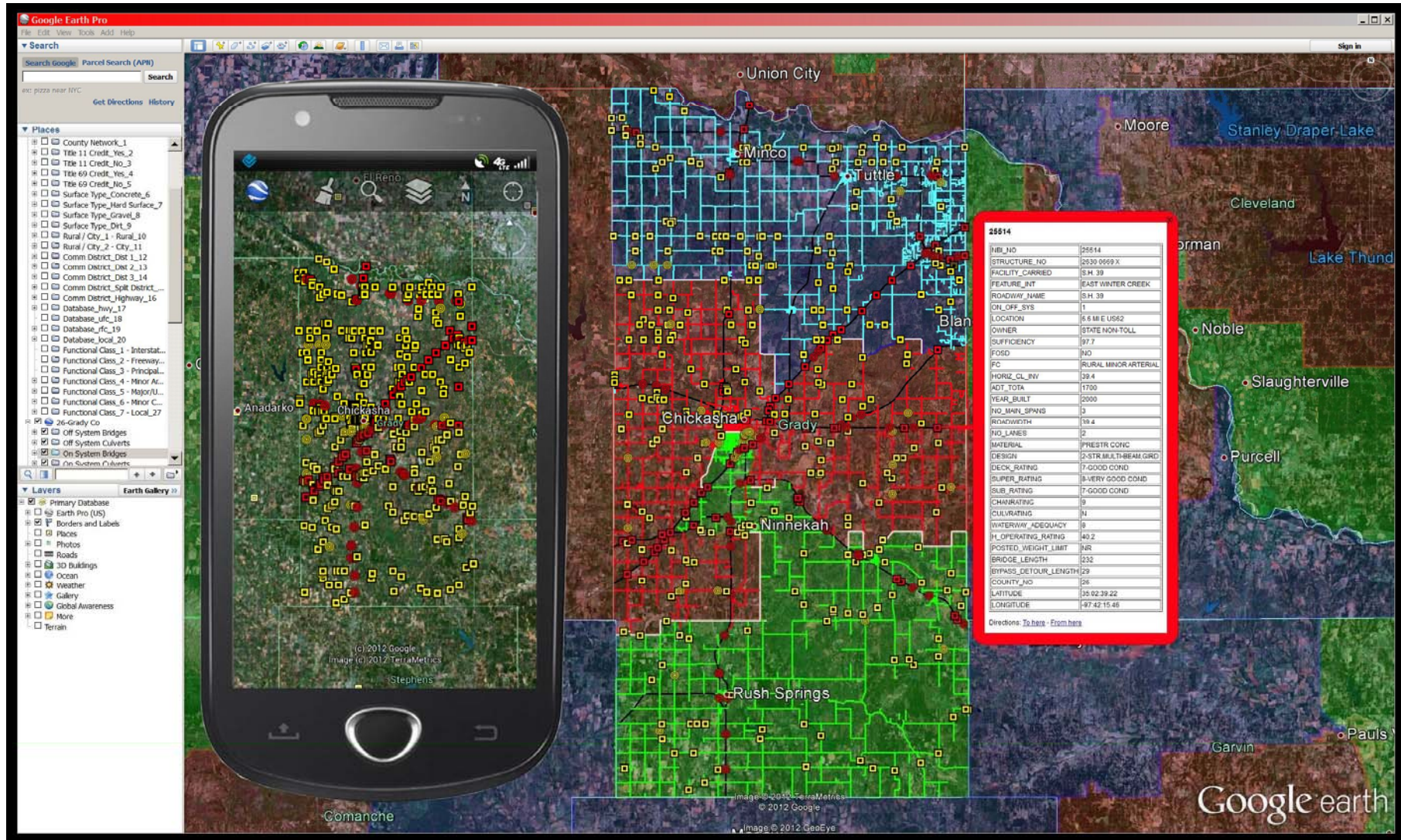
The image displays a Google Earth interface with several windows and a central data table. A red box highlights the table for structure ID 18092. A green box highlights a street view of the bridge. An orange box highlights a video view of the bridge. A red box highlights a maintenance vault data view.

18092	
INR_NO	18093
STRUCTURE_NO	0703 0445.X
FACILITY_CARRIED	UNIVERSITY AVE
FEATURE_INT	U.S. 69 UNDER
ROADWAY_NAME	U.S. 69 UNDER
CR_OFF_SYS	1
OWNER	STATE NON-TOLL
SUFFICIENCY	97
FOSD	N/A
FUNC_CLASS	URBAN FREEWAY EXP
VC	15.25
HORIZ_CL_INV	54
ACT_TOTA	20100
YEAR_BUILT	1971
NO_MAPL_SPANS	2
ROADWIDTH	38
NO_LANES	4
MATERIAL	STEEL CONT
DESIGN	3-STRMULTI-BEAM GRID
DECK_RATING	7-GOOD COND
SUPER_RATING	7-GOOD COND
SUB_RATING	7-GOOD COND
CHANN_RATING	N/A
CULV_RATING	N/A
WATERWAY_ADEQUACY	N/A
H_OPERATING_RATING	44.9
POSTED_WEIGHT_LIMIT	N/A
BRIDGE_LENGTH	209
BRIDGE_DETOUR_LENGTH	0
COUNTY_NO	07
LATITUDE	34.0017.44
LONGITUDE	96.2409.57
LATITUDE_DEC	34.0048
LONGITUDE_DEC	96.4992
MAINTENANCE_VAULT	Maintenance Vault
VIDEO_LOG	Video Log Viewer
GOOGLE_MAP_SEARCH	Google Bridge Search
FOLDER	Folder Options

Rating Summary:

NUMBER	DESIGN	ACCEPTABLE STRESS RATIOS				GOOD FACTOR RATIOS					
		LOAD FACTOR	TRUCK	R	WIND	TRUCK	TRUCK	R	WIND		
NO. 1	SR (CONCRETE)	5.57	8	21.3	103.00	1	1.10	2	26.9	100.00	1
NO. 2	SR (CONCRETE)	2.38	9	43.7	103.00	1	1.24	1	46.4	100.00	1
NO. 3	SR (CONCRETE)	5.57	8	42.6	103.00	1	1.10	2	46.4	100.00	1
NO. 4	SR (CONCRETE)	5.89	8	47.1	87.00	1	1.24	2	85.7	100.00	1
NO. 5	SR (CONCRETE)	1.28	8	51.2	87.00	1	1.48	8	55.8	87.00	1
NO. 6	SR (CONCRETE)	2.38	8	61.6	87.00	2	1.10	8	93.1	87.00	1

Different options to view when clicking on a Bridge Structure



Improved Accessibility to More Platforms and Devices